

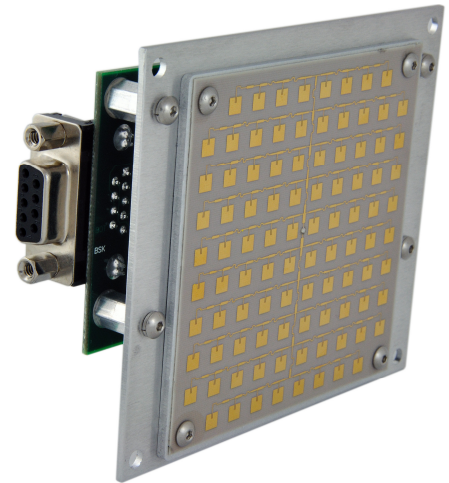
Houston Radar DR2500 OEM Doppler Radar

Short Form Datasheet
Rev 1 Dec 2009



Availability: Full Production

Houston Radar's DR2500 K-Band Doppler sign activation/speed radar is a state of the art ultra long range and low power Digital Signal Processing (DSP) based OEM radar for the traffic calming/VATCS market. It is the longest range lowest power radar in the market with pickup range exceeding 2000 feet (600m) for most targets and power usage of less than 0.65Watts.



- Lowest power speed radar with longest pickup range
- 2000 feet (600m) typical pickup range for most compact vehicles
- FCC pre-approved
- Fully configurable via 2x RS232 serial port for enhanced flexibility
- Wide input voltage operating range allows solar operation
- 3.7Wx3.2Lx0.9D in (95x83x23 mm) open frame ultra-thin profile
- Firmware "bootloader" allows for field upgrading of firmware
- Best in class "Advanced In-Radar" traffic statistics option available
- One 600mA current sink "vehicle detect" trigger output
- Advanced self-test feature built-in
- Mechanical footprint/mounting holes and interface same as DR1500

Specifications & Recommended Operating Conditions

VCC	9.6VDC min	18VDC max (21V tolerant)
ICC@12VDC	28mA min	34mA max (32mA nominal)
RF out		27dBm EIRP
Freq out	24.125GHz center \pm 25MHz	
Operating °F/C	-40min	185°F/85°C max
Trigger output		600mA sink max
Comm Interface	2x 3 wire RS232	
Baud Rate	1200 to 115200 baud configurable	
Pickup Distance	2000 feet(600m) typical for compact car	
Beam Angle	12°x24°	
Polarization	Linear	
FCCID	VECDF300-0	
Dimensions	3.7" W x 3.2" H x 0.9" D (9.5 x 8.3 x 2.3 cm)	
Weight	0.5lb (0.2Kg) approx	

Note: Pickup range will vary with target, installation and road conditions.
Range listed is typical on open road with radar mounted 5 feet above ground.

IO/PWR Connection Details

Pin#	Function	Dir	Description
1	VCC	PWR	9.6 to 18VDC
2	PRI 232TX	Out	Primary RS232 TX
3	PRI 232RX	In	Primary RS232 RX
4	AUX 232RX	In	Auxiliary RS232 RX
5	GND	PWR	VDC Ground
6	AUX 232TX	Out	Auxiliary RS232 TX
7	Trig	Out	Open Drain Trigger
8	N/C	-	Do not connect
9	GND	PWR	VDC Ground

Note: Connector is female DB9 right angle