



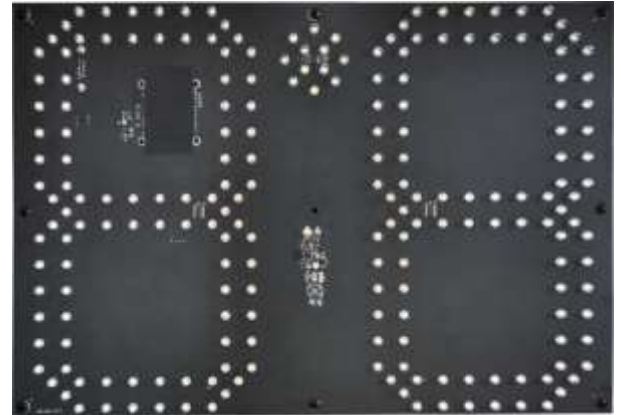
PNL10 OEM

Radar Speed Sign Kit

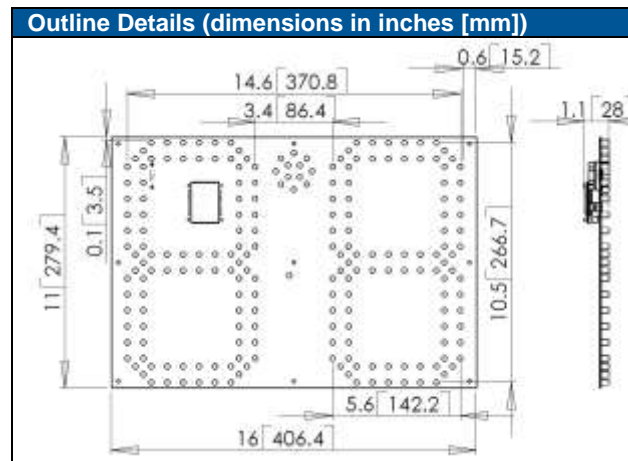
PNL10 kit is an ultra low power speed measurement and display building block. Our state of the art SS400 Doppler radar integrated with a two-digit 7-segment display makes it ideal for use in small, thin and light radar signs for school zones, residential roads, home owners associations, business parks, private roads, large parking lots and other similar installations. With an addition of a power source and enclosure, this kit can be quickly brought to market as a complete product.

Features and Benefits

- Zero cables highly integrated design assembles in minutes
- 10.5" digit height with 30% inter-character separation is matched to 300 ft (90m) detection range of the radar for optimal display legibility
- Best in class power efficiency achieved by:
 - Low power SS400 radar drives display eliminating extra CPU
 - In built ambient light sensing and automatic brightness control
 - Ambient temperature compensation of LED drive voltage
 - High efficiency boost regulator for LED drive voltage
- With no traffic present, radar automatically powers down the display further reducing power consumption to only 0.06W
- Wide input supply voltage operation allows flexible power supply options ranging from 3, 4 or 5 cell Lithium Ion packs to 6 or 12V Lead Acid batteries without sacrificing sign efficiency
- Built-in rotary switch allows user to set cutoff and violator speed alerts in the field without connecting to a computer
- White LED strobe and display flashing can be optionally activated to draw attention to speeding
- Easily expandable to a third digit via 5-pin connector
- Radar is FCC approved with CE mark and available in 24.125GHz and 24.200GHz versions for worldwide deployment
- Complete reference design and evaluation and demo system with state of the art LiFePO4 batteries available to test 2" deep sign



Specifications & Recommended Operating Conditions	
Specification	Recommended Condition
Vcc	5.5VDC to 16VDC (18V max)
Icc@12VDC (Radar always on)	Display blank: 9.5 mA
	Display at night: 21 mA
	Display max bright: 415 mA
Radar RF out	5 mW maximum
Radar f _{center}	24.125GHz or 24.200 GHz
Operating °F (°C)	-40 (-40) min to 185 (85) max
Pickup Distance	300+ feet (90+ m) in most cases
Beam Angle	38°x45°
Beam Polarization	Linear
FCC ID (Radar)	UXS-IPS154US
CE Mark (Radar)	Yes
Dimensions	11"x16"x1.1" (28 x 41 x 2.8 cm)
Weight	1 lbs (450g) approximately
Display Brightness	11,000 nits (cdm) maximum 550 nits (cdm) at night



All specifications are subject to change. Pickup distance is typical and will vary with road conditions and targets.